



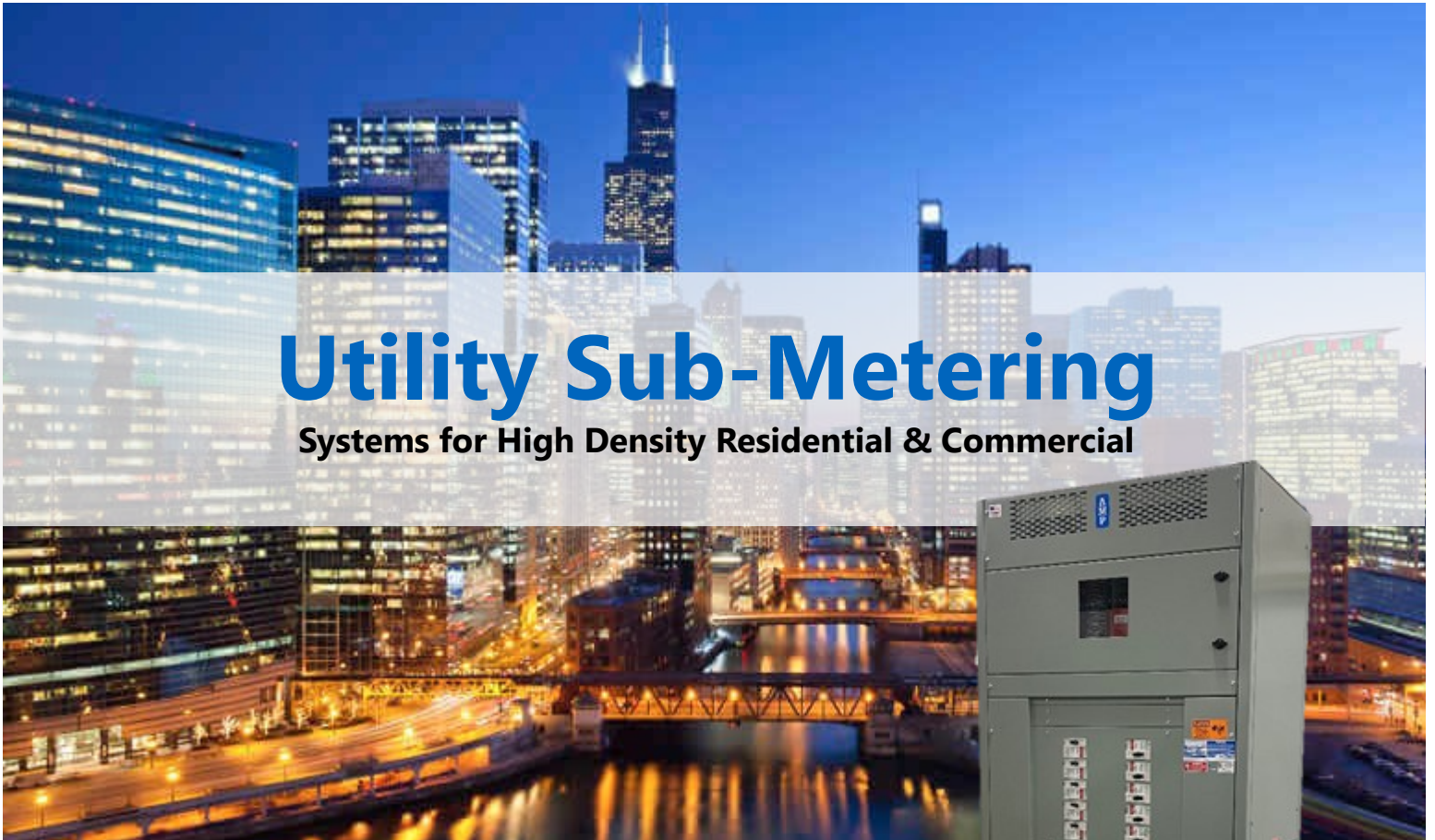
# American Midwest Power

*Solutions for Power*

**FROM SPACE SAVER TO INFORMATION CORNERSTONE**

## Utility Sub-Metering

**Systems for High Density Residential & Commercial**



**An alternative to traditional modular utility metering. Accurate real-time data, designed to fit your needs.**

AMP is the premier manufacturer of standard & custom electrical distribution products, committed to finding you *Solutions For Power.*

# ABOUT US

American Midwest Power has been manufacturing quality power distribution equipment for the residential, commercial, industrial and institutional markets. AMP gear can be found in all 50 states and many countries throughout the world. From lightweight busways to custom-engineered switchboards, our commitment to quality includes easy to install equipment, expert engineering assistance, and custom build services.

Customer satisfaction is our number one priority. With two dedicated manufacturing facilities located in Minneapolis, Minnesota, AMP has the manufacturing capacity to handle even the most compressed construction project schedules. AMP maintains a standard of excellence to the electrical industry and we are committed to providing our customers with quality, cost-effective products utilizing innovative designs and creative engineering, all delivered on-time and within budget.



## AMP SUB-METERING INFO.

Submetering can determine actual energy usage of leased commercial & multi-family residential tenant space as a basis for energy billing or cost recovery. Applications of submetering may be found in any master metered multiple tenant buildings and are also useful in determining common area energy costs such as lighting, parking lot lighting, HVAC, etc.

American Midwest Power's utility sub-metering systems for both multi-family residential and commercial retail offer an alternative to traditional modular utility metering. AMP's integrated meter panels use a low cost, communicating, utility grade, high quality kWh meter for all utility sub metering applications. All meters are pre-installed by AMP into either distribution panels, switchboards or meter centers and factory wired to eliminate field installation costs associated with typical hard wired sub-meter installations.

- Revenue grade accuracy with solid core current transformers
- Factory installed and wired into AMP distribution equipment
- Wireless RF communication for (AMR) automatic meter reading
- Windows based billing software for easy use
- LEED contributory for Energy & Atmosphere Credit 5.1—Measurement & Verification
- Optional third party billing services
- Meets or exceeds ANSI C12.1 code for electricity metering
- 5 year meter warranty





# SUB-METERING FEATURES & OPTIONS

## FEATURES

- **Wiring Options** | Sub-Metering can be designed to be hard-wired or wireless depending on your needs and if it is a retrofit application.
- **Wireless Communication Option** | kWh data from the meters can be communicated wirelessly to a receiver that is connected to an owner supplied PC for data collection. This RF communication virtually eliminates all of the interconnection wiring and daisy chaining between meters and collection points that are normally required with traditional hard wired sub-metering systems.
- **Tenant Billing Option** | AMP sub-metering solutions can include a Windows based open architecture tenant billing software that allows for easy automated billing of tenants. This provides flexibility so the building owner can either handle the billing themselves or have it managed through a third or forth party billing service provider or property manager.

## BENEFITS

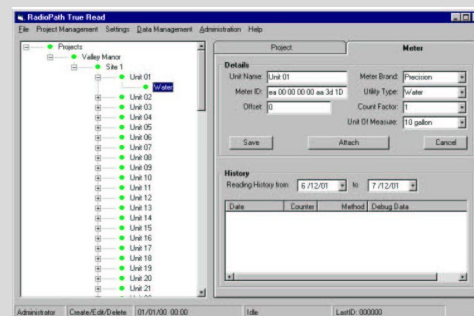
- **Decreased Cost & Space Savings** | Reduced labor costs and a smaller footprint of 50% compared to traditional utility metering.
- **Mixed Use/Commercial Metering** | Three phase commercial Meters are also available for projects that have mixed use tenants of both single phase residential and three phase commercial. The AMP sub-metering solution can wirelessly monitor both in the common billing software.
- **Distribution Integration** | AMP sub-metering can be combined with other AMP distribution products such as AMP type QB busduct with integrated direct bus "T-Taps" for a fully integrated power distribution and utility sub-metering solution that is both space saving and reduces labor. The elimination of the fused or circuit breaker bus plug and all of the associated conduit, wire and fittings reduces not only a tremendous amount of material cost, but also the time and cost that is required to coordinate and install all of those components.
- **Retrofit Applications** | AMP can also retrofit sub-metering to existing facilities by utilizing separate NEMA 1/3R enclosures with integrated sub-metering, surface mounted adjacent to the existing distribution equipment. Whether it is a new or existing facility requiring utility sub-metering contact AMP to see how we can create customized solutions to meet your application.

Additional option - RF Transmitter

Embedded panel mount branch circuit monitor

Solid core CT & thermal magnetic circuit breaker

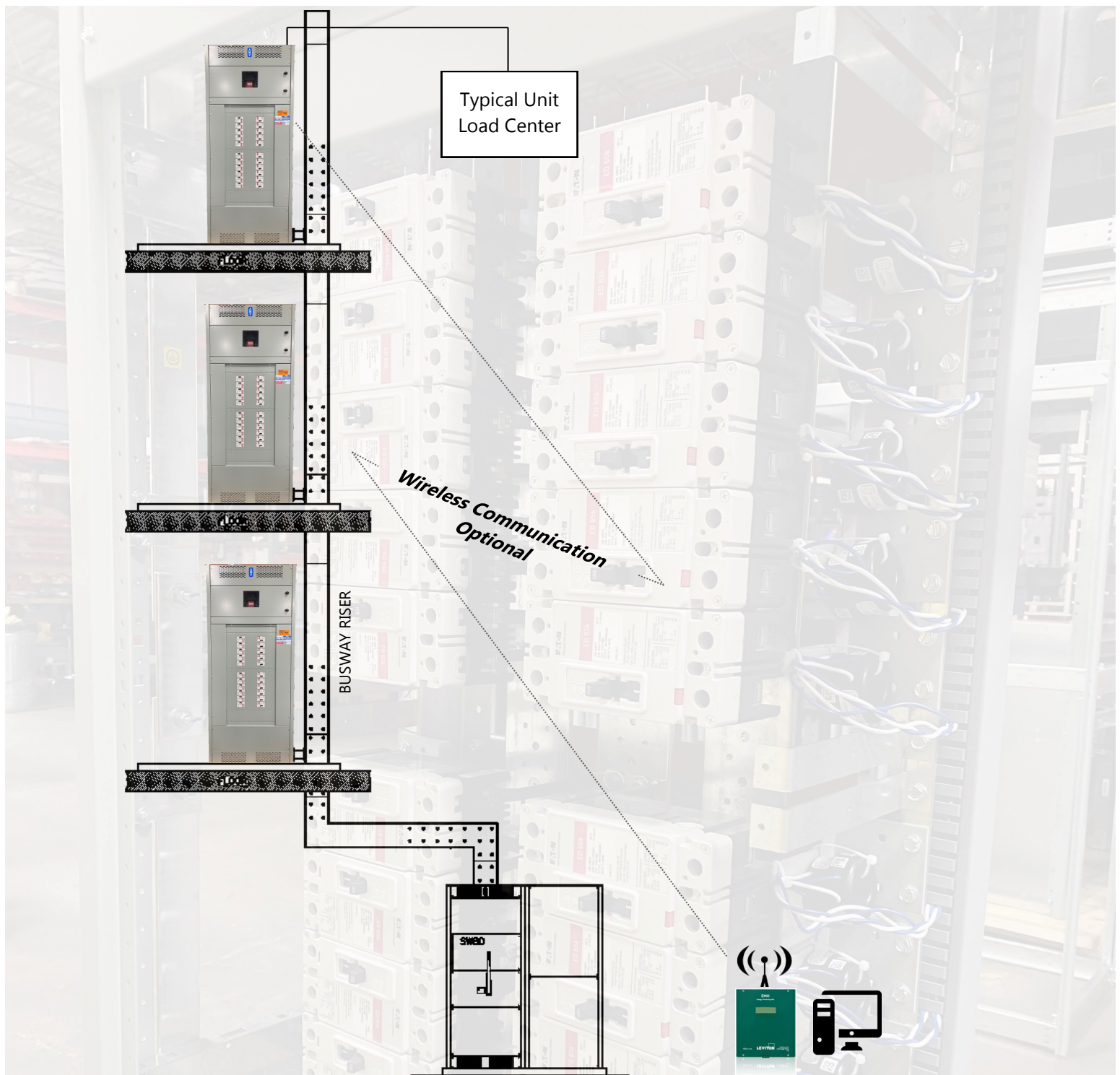
AMP integrated sub-metering center



Tenant billing software options



# TYPICAL MID/HIGH-RISE LAYOUT



## American Midwest Power

3131 Vicksburg Lane

Minneapolis, MN 55447

1-800-328-8658 | [www.ampmfg.com](http://www.ampmfg.com)

